

*Create a legacy of*  
**Exceptional Doctors**  
**Exceptional Nurses**  
**Exceptional Teams**  
**Exceptional Equipment**  
**Exceptional Facilities**  
**Exceptional Healthcare**

Your gift in Will can keep The Wesley Hospital  
**Exceptional, always.**





## Our promise to you.

We will always treat your legacy, your values and your privacy with respect.

We understand that your loved ones must come first.

With your consent, we will share information about how your legacy can help transform lives.

We will honour your gift and promise to direct it to the areas of greatest impact.

We respect your right to change your mind about leaving a gift in your Will.



"As soon as I met the team at The Wesley Hospital, I knew this was the place Keely needed to be. The place that could save her life."

— Cathy, mum of cancer patient, Keely.

## Our ambition: exceptional always.

For decades, The Wesley Hospital has been dedicated to providing our community with the exceptional healthcare it deserves.

Generations of Queenslanders have turned to us in their darkest hours. And thanks to the generous support of donors like you, our compassionate team of doctors, nurses and specialists have had the resources to provide them with life-saving care and treatment.

Determination is in our DNA. We've always given our all, and with your support, we always will.

By choosing to remember us in your Will, your lifetime of care and compassion will live on at The Wesley Hospital – and in the lives of all those who come to us in their time of need.

**Your legacy can help keep us on the forefront of medical innovation, and continue providing exceptional healthcare, when it matters most. Together, we can redefine the future of healthcare, for generations to come.**



**Jason Burton**  
General Manager





## Your life-saving legacy.

For over 40 years, The Wesley Hospital has been central to the health and wellbeing of so many lives in Queensland.

As leaders in innovation and medical technology, we have continued to challenge what's possible and redefine healthcare in hospitals throughout the country.

And as we look to the exciting opportunities ahead, it is compassionate people like you who will help us secure our future funding so that

we can continue delivering exceptional healthcare and groundbreaking new discoveries for generations to come.

Nobody can say for certain when the next innovation will come, but with compassionate people like you beside us, we will always be prepared to act, seizing life-saving opportunities as they arise.

Make your legacy the next great step in exceptional healthcare. With a gift in your Will, you can support the innovation, technology and facilities that ensure generations of Queenslanders will always have the care and compassion they deserve.



# An exceptional career.

We sat down with Sally Epple, Director of Clinical Education, to discuss her work at The Wesley Hospital, and the transformative power of legacy giving.



## What makes The Wesley Hospital such a special place for patients and families?

It's a hospital that provides exceptional patient care and has an excellent culture. Despite its size, there's a genuine feeling of family and connectedness, which transfers to how patients and families are cared for.

We are committed to being of service to all patients and their families, and to providing the very best patient care and outcomes.

## How important is donor support?

We are a non-profit organisation, so donor support is crucial to helping fund additional work such as staff development programs and other improvements that help us deliver an excellent patient experience.

## What are your hopes for the future of The Wesley Hospital?

Our hope is that The Wesley Hospital continues to grow its already outstanding reputation and capacity to provide exceptional patient care.

## How does legacy giving impact the future of The Wesley Hospital?

A gift in Will allows us to further innovate, and support education and quality improvement initiatives that directly impact patient outcomes and experiences. It helps support our position as leaders in healthcare. This, in turn, makes us a 'magnet' for healthcare professionals and their patients, allowing us to continue growing, continue innovating, and continue delivering the exceptional healthcare we pride ourselves on.

## What message would you like to share with someone considering leaving a gift in their Will?

Yours would be a truly exceptional legacy. One that we would use wisely and respectfully. A legacy that could have an impact which flows across generations of patients and staff.



# The power of a gift.

The best healthcare in the world requires the most cutting-edge technology and facilities in the world. By choosing to leave a gift in your Will, you are helping ensure The Wesley Hospital can purchase the life-saving equipment and facilities to ensure the best surgical and treatment outcomes for our community.

Already, major donations such as gifts in Wills have made it possible to purchase state-of-the-art technologies such as:



## SynchroSeal

This surgical sealing system combines sutures and a sealing material to close wounds or incisions in the body. Offering a reliable and effective method for wound closure, the SynchroSeal reduces the risks of complications such as infection while promoting faster healing.



## NanoKnife

The NanoKnife is a cutting-edge, minimally invasive surgical device specifically designed for the treatment of tumours. Its enhanced precision and accuracy allows for targeted treatment, leading to better surgical outcomes, reduced complications, and faster recovery times.



## BK5000 Ultrasound

This advanced portable ultrasound machine uses soundwaves to create real-time images of internal organs or structures in the body. Non-invasive while providing high resolution images, the BK5000 enables doctors to visualise and diagnose medical conditions with greater accuracy and precision.



## BioJet

This innovative medical tool uses a high-pressure jet of sterile fluid to effectively clean and remove debris from wounds or ulcers – promoting faster healing while removing bacteria and contaminations to reduce the risk of infection.



## Trumpf Operating Table

The Trumpf Operating Table works in tandem with the Da Vinci Robotic Surgical System, providing a stable and adjustable surface that moves seamlessly with the robot during surgery. This synchronised movement helps support optimal surgical positioning, enhances comfort and safety for the patient, and enables surgeons to perform complex procedures with greater accuracy and ease.



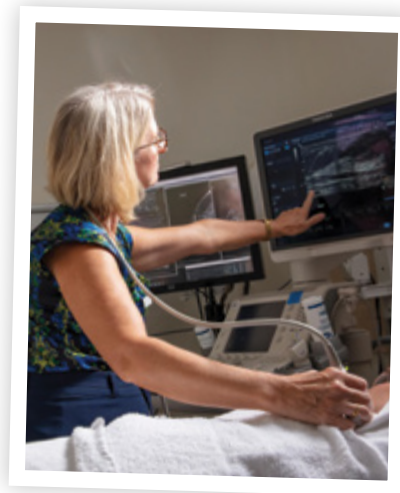
# How a gift becomes a legacy.

Here are just some of the latest innovations made possible thanks to compassionate people like you.

## Innovation in breast cancer screening

The Wesley Hospital is committed to providing women with the advanced breast screening services they deserve. A few years ago, we were delighted to be able to install our first 3D Tomography Machine (Tomo) at The Wesley Breast Clinic.

This state-of-the-art equipment puts us at the forefront of breast screening services for Queensland women – enhancing patient comfort, while enabling the highest standard of imaging to protect women’s lives.



Your legacy can help us continue providing Queenslanders with the cutting-edge technology that saves lives.

## Donor supported education program

Over the years, compassionate supporters like you have been instrumental in driving education programs that continue to transform patient care at The Wesley Hospital.

Programs such as the Noel Kahler Quality Improvement Leadership Program foster emerging clinical leaders to help ensure our teams represent the very best and brightest in their fields. This allows us to continue leading the way in healthcare within our community and throughout Australia – bettering lives and medical outcomes for all Queenslanders who walk through our doors.

Your legacy can continue driving the transformative education programs that foster a culture of innovation and excellence at The Wesley Hospital.



## One-of-a-kind cancer support

Cancer can be a devastating diagnosis, often leaving patients and loved ones in a state of shock. We created the Choices Cancer Support Centre to provide Queenslanders with life-changing psychosocial, physical and emotional support throughout their cancer journey.

From healing through art therapy, to rural and regional outreach, Choices provides cancer patients with ongoing positive support to help keep their hope alive, and empower them to continue the fight. *“We’re here to make a difference for the patients,”* says Dr Janine Porter-Steele, Clinical Nurse Manager of The Wesley Hospital Choices Cancer Support Program. *“It’s about explaining information to give them back their hope and optimism.”*

Your legacy can help The Wesley Hospital continue providing and expanding life-changing programs like Choices to help restore a sense of hope for people facing their greatest challenges.





*"It brings me joy knowing that my gift will help future generations."*

*– Maureen, Bequestor.*

## Creating a legacy is simple, and meaningful.

As a donor and a past patient at The Wesley Hospital, I cannot express enough how grateful I am to the wonderful staff who made my recovery easier.

It brings me joy knowing that my gift will go on to help future generations. You don't need a lot of money. Every gift, no matter the size, helps support the work they do.

Leaving a gift in your Will can help save lives and contribute

to new technology, facilities and staff development to enhance the already exceptional care provided at The Wesley Hospital. It's also a great way to give back and help a cause that's close to your heart.

I thought it was going to be very complicated, but it was a simple matter of telling my solicitor how much I wanted to leave in my Will. There was no drama, and there's no ongoing paperwork involved.

*– Maureen.*

## Voices of the community.

Your legacy can be a future where all Queenslanders receive the exceptional healthcare they need – and deserve.

*"To have the specialists all in the one facility, all working together – I feel I could not be getting better care than I am getting at The Wesley Hospital."*

*– Marjorie, patient.*



*"The staff were so lovely, and the care provided to me has been priceless."*

*– Ruth, cancer survivor.*

*"When I first started looking for help, what drew me to The Wesley Hospital was their pride in offering the 'gold standard' of cancer care and treatment. After years of frustration, I knew exactly what we needed. And we found it at The Wesley Hospital."*

*– Cathy, mum of cancer patient, Keely.*







# How to leave a gift in your Will.

Your Will is crucial to ensuring your estate is distributed to the people and organisations you care about the most.

It's a good idea to review your Will every time your life circumstances change (for example, you buy a house or get married), to ensure it reflects your current circumstances and wishes.

If you're considering leaving a gift in your Will to The Wesley Hospital, it's important to think about what type of gift and impact you want to make.

The main types of gifts are:



## **A percentage of your estate:**

This can be any percentage of your estate up to 100%.



## **The residue of your estate:**

The whole, or a portion of what is left of your estate after all other gifts have been made and all estate debts paid.



## **A specific gift:**

A fixed sum of money, or items such as shares, property or superannuation.





# Simple steps to leaving a gift in your Will.

It isn't hard to create a Will, but you have to be organised. Here, we've provided a checklist you can use while preparing your Will.

## ☐ **Speak with your friends and family**

Let your loved ones know about any charitable intentions to ensure your wishes are carried out.

## ☐ **Choose what type of gift to leave**

We've listed the main types of gifts on the previous page.

## ☐ **Choose your executor to appoint your Will.**

This can be up to four people, such as friends, relatives, your solicitor or your bank.

## ☐ **Enlist professional guidance**

Such as a solicitor or a Public Trustee.

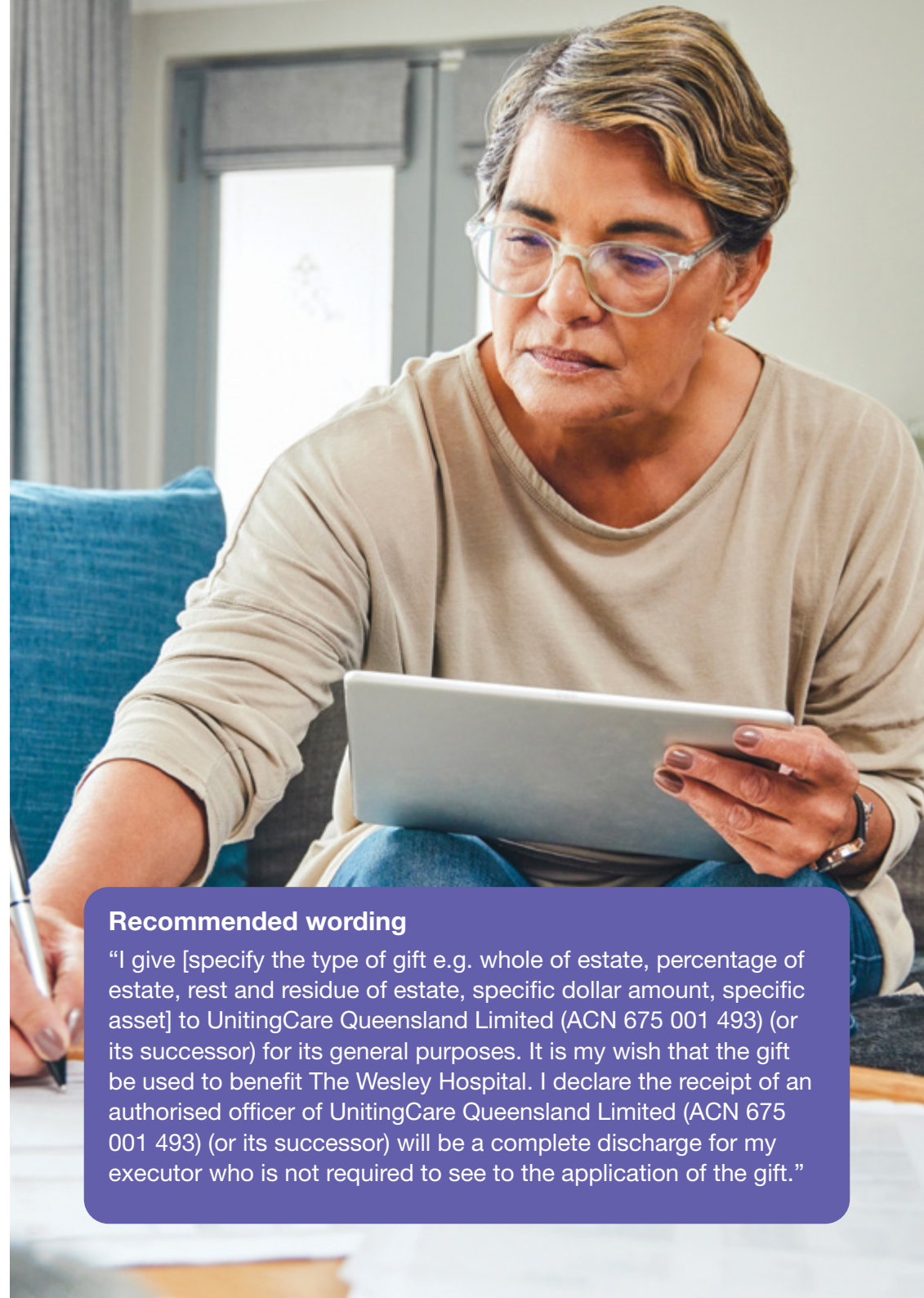
## ☐ **Write your Will**

If you choose to leave a gift in your Will to The Wesley Hospital, be sure to use the recommended wording we've provided on the right.

When writing your Will, you must sign and date every page. Your signature must be witnessed by two people who are not beneficiaries in your Will and should be dated. It is prudent to sign each page of the Will.

## ☐ **Store your Will**

Store your original Will in a safe and secure place such as safe custody facilities with your bank or solicitor.



### **Recommended wording**

"I give [specify the type of gift e.g. whole of estate, percentage of estate, rest and residue of estate, specific dollar amount, specific asset] to UnitingCare Queensland Limited (ACN 675 001 493) (or its successor) for its general purposes. It is my wish that the gift be used to benefit The Wesley Hospital. I declare the receipt of an authorised officer of UnitingCare Queensland Limited (ACN 675 001 493) (or its successor) will be a complete discharge for my executor who is not required to see to the application of the gift."

# Frequently asked questions.

## **Q. Can The Wesley Hospital help me write my Will?**

The Wesley Gifts in Wills Team cannot assist you in writing your Will. We recommend you consult with a solicitor or the Public Trustee in your state that offers Will writing services.

## **Q. I don't have much money to leave...will it make a difference?**

You don't have to be wealthy to remember a charity in your Will. Whoever you are, whatever your situation, even a small portion (or percentage) of what is left of your estate can have a significant impact on the lives of Queenslanders.



## **Q. Can I specify how my gift is used?**

We recommend leaving your gift for general purposes. This gives The Wesley Hospital the flexibility to respond to changes and new opportunities in the future, and direct your gift to the areas of greatest impact. Leaving a gift in your Will for a specific purpose might mean that we cannot fulfill your wishes if we are no longer doing that specific work at the time the gift is made. If you would like to leave your gift to something specific please contact us on 1800 961 331 to discuss it.

## **Q. I've already made a Will – how do I change it?**

If you need to make changes to your current Will, we suggest you contact a solicitor who can advise on how best to change the Will (e.g. make a new Will or amend the Will by Codicil). It is important to consult a solicitor when changing your Will, to ensure your objectives are achieved. Never amend your Will by crossing out information.

## **Q. Can I leave assets like property or shares to The Wesley Hospital?**

The Wesley Hospital welcomes gifts such as shares or property, provided that we have permission to sell these assets and use the funds for our purposes.

## **Q. Do I need to let you know that I've included The Wesley Hospital in my Will?**

It's entirely up to you whether you let us know about your gift in Will. If you do let us know, we'd love to show our gratitude, and stay in touch to keep you connected to the impact your gift will have on future generations of Queenslanders.

## **Q. Who else should I tell about my decision to leave a gift in my Will to The Wesley Hospital?**

We strongly recommend that you advise your loved ones of your decision to leave a gift in your Will to The Wesley Hospital. This will help them understand your wishes and ensure they're carried out.



**Thank you for requesting more information about supporting exceptional healthcare for Queenslanders through a gift in your Will.**

It's only natural to have questions. If this pack hasn't answered them all, please reach out to our Gifts in Wills team on 1800 961 331 today. We'll be happy to answer any questions you might have.



# When future generations need exceptional healthcare, they will be able to thank you, always.

For more information, please contact our Gifts in Wills Team on 1800 961 331 or email [plannedgiving@ucareqld.com.au](mailto:plannedgiving@ucareqld.com.au).

Proudly part of

